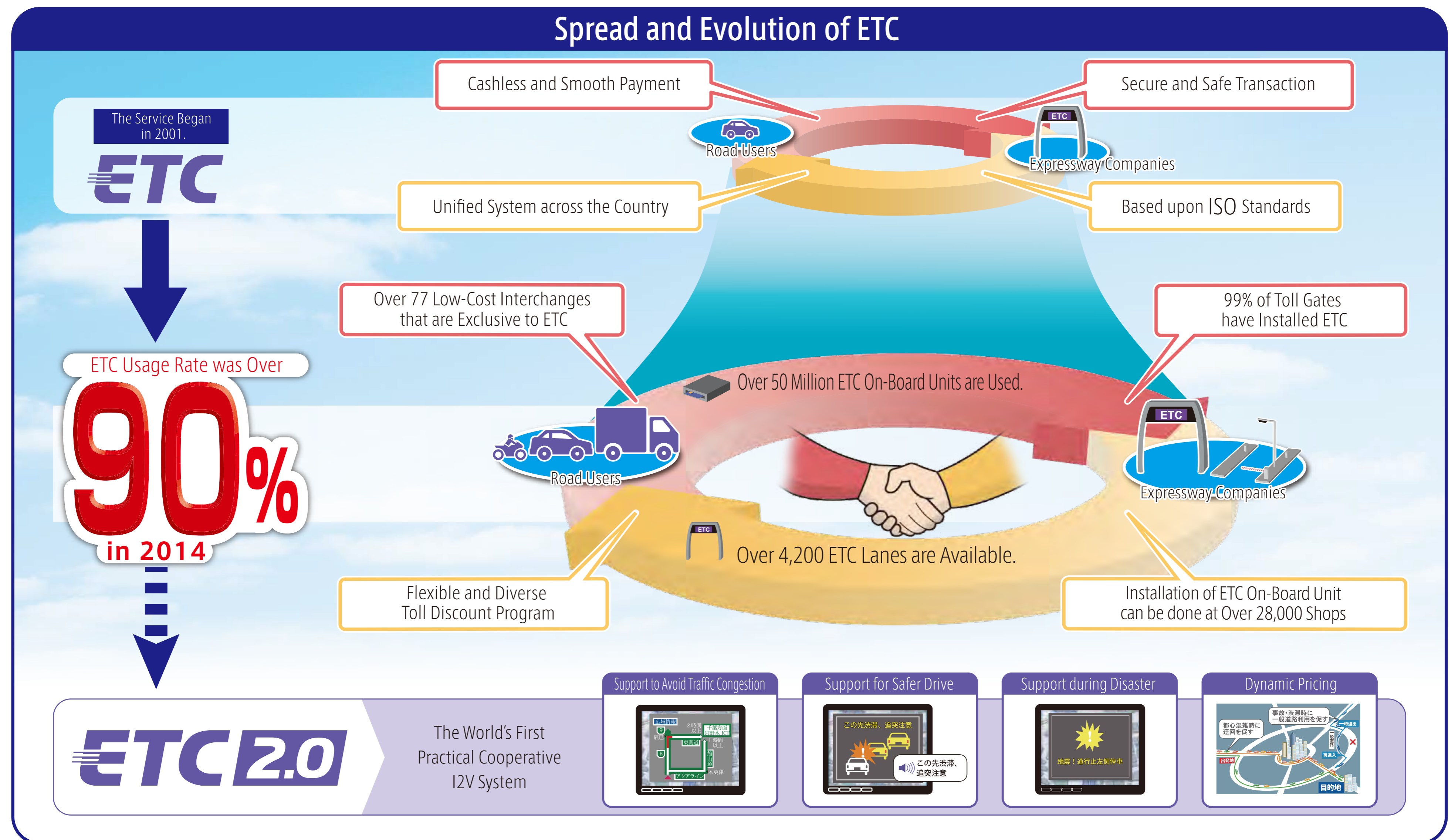


More than 90% of Road Users Pay Tolls by ETC Social Infrastructure of Japan, "ETC"

도로 이용자의 90% 이상이 ETC로 통행료 지불
일본의 사회 인프라, "ETC"

Win-Win Relationship between Road Users and Expressway Companies

ETC has established mutually beneficial relationships between road users and expressway companies, and the ETC usage rate has exceeded 90%. ETC takes root as a social infrastructure that supports the road traffic of Japan. ETC is now evolving into the next generation ETC 2.0.



Clearing Toll Gates Congestion and Reducing CO₂

Congestion caused by stop and go at toll gates has been cleared, and brought about saving travel time of road users and reducing CO₂.

