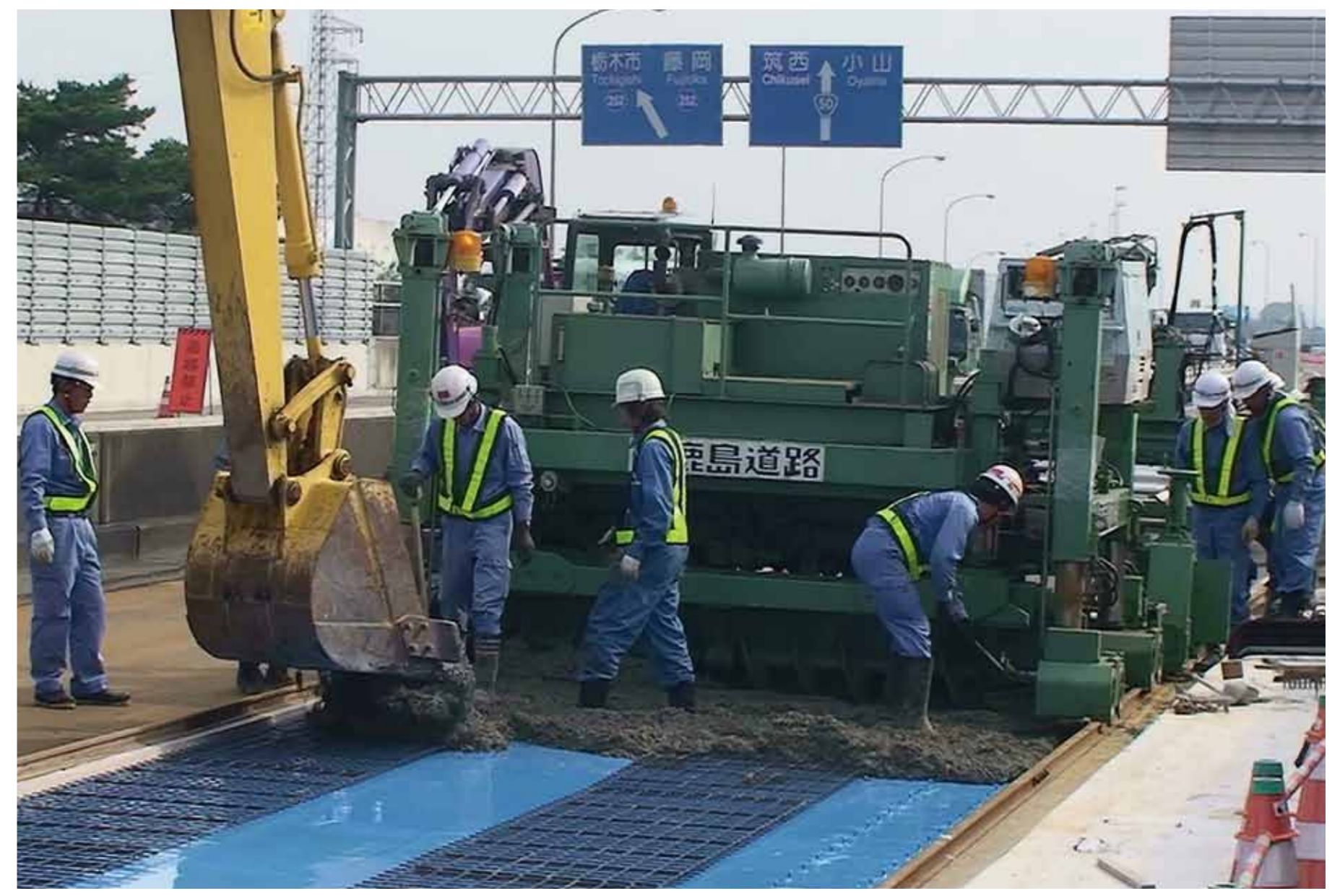


Method for repair and reinforcement with epoxy adhesives

에폭시 접착제와 함께 이용하는 보수 및 강화 제품

The adhesion overlay industrial method is a repair method that spreads the adhesive on existing concrete slabs or existing orthotropic steel deck plates to increase concrete thickness and to adjust height .



1 Concrete Overlay Construction Method with Adhesives and SFRC To Extend a life of Orthotropic Steel Deck Bridges.

※ SFRC : Steel Fiber Reinforced Concrete



2 Concrete Overlay Construction Method with Adhesives to adjust the inclination in Airports.