

# Porous Surface Mastic Asphalt Course POSMAC

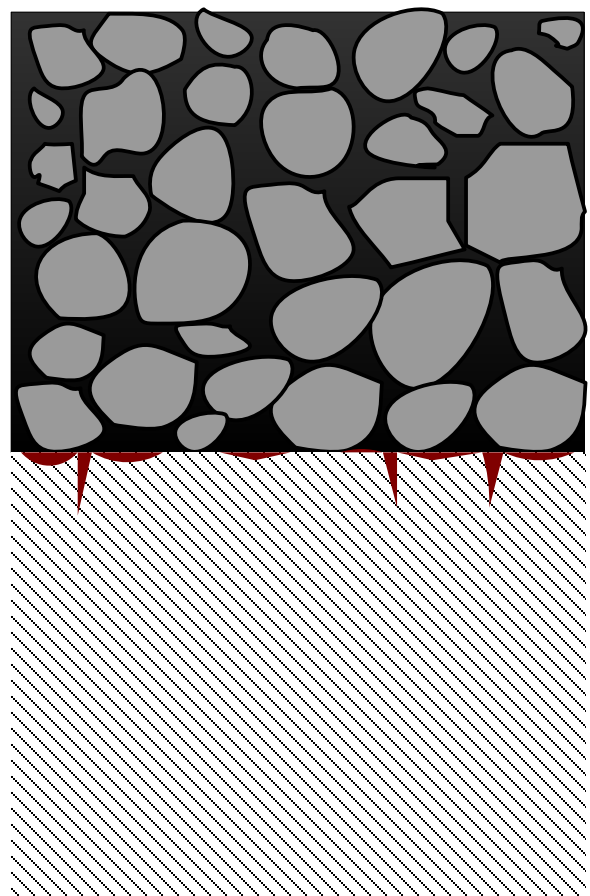
## طرق الأسفلت ذي السطح المطاطي الامتصاصي

### Overview

**Porous Surface Mastic Asphalt Course (POSMAC)** is a porous asphalt mixture with good water impermeability function at the bottom of mixture. Porous asphalt mix is paved using Self Priming Asphalt Finisher with high concentrated modified asphalt emulsion. Thus, it constructs highly durable porous asphalt pavement with good water impermeability at the bottom.



#### General pavement



*Exacting*

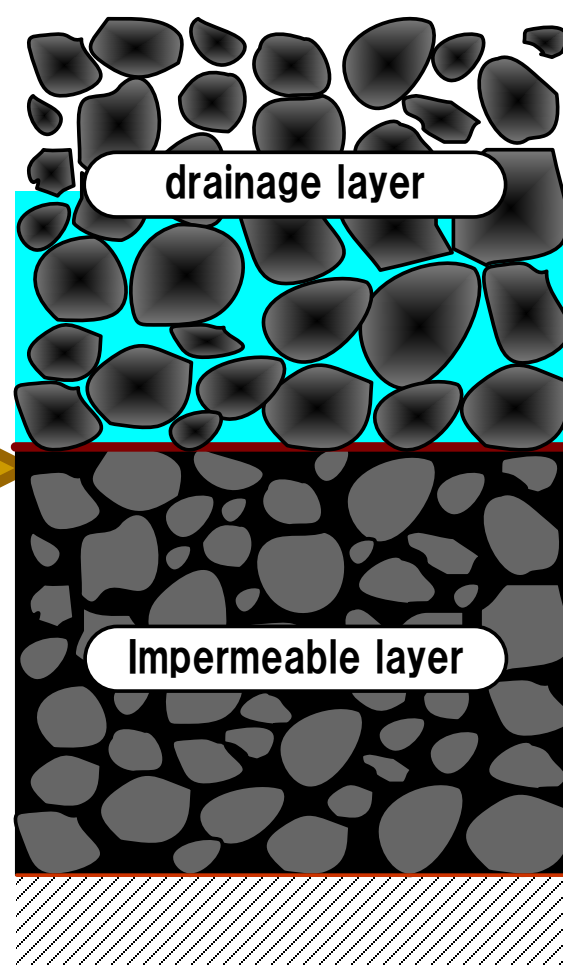
wheel load

temperature

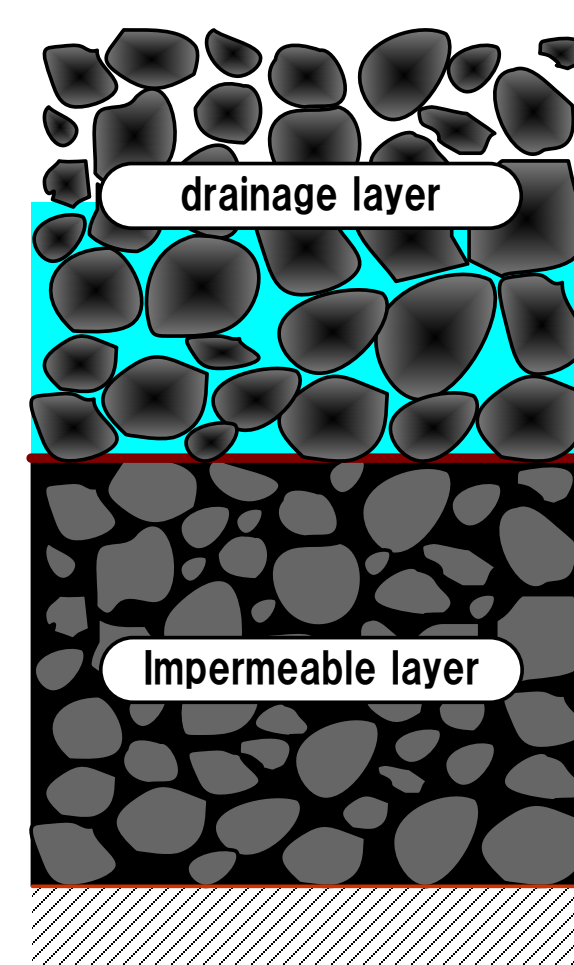
ponding

spot  
adhesion

#### Porous asphalt

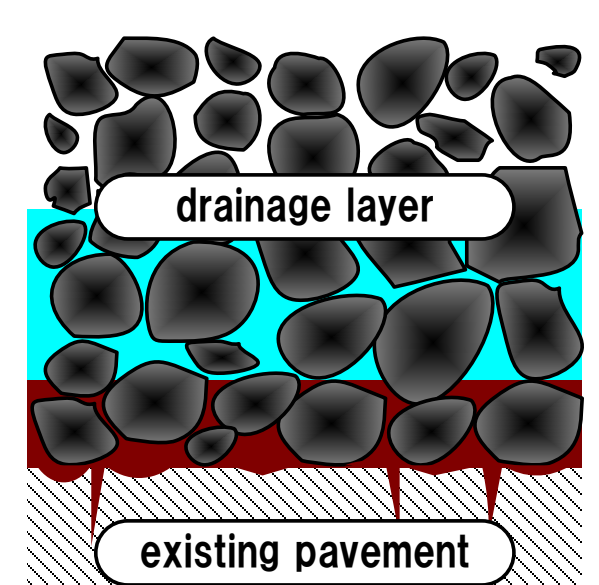


#### Porous asphalt



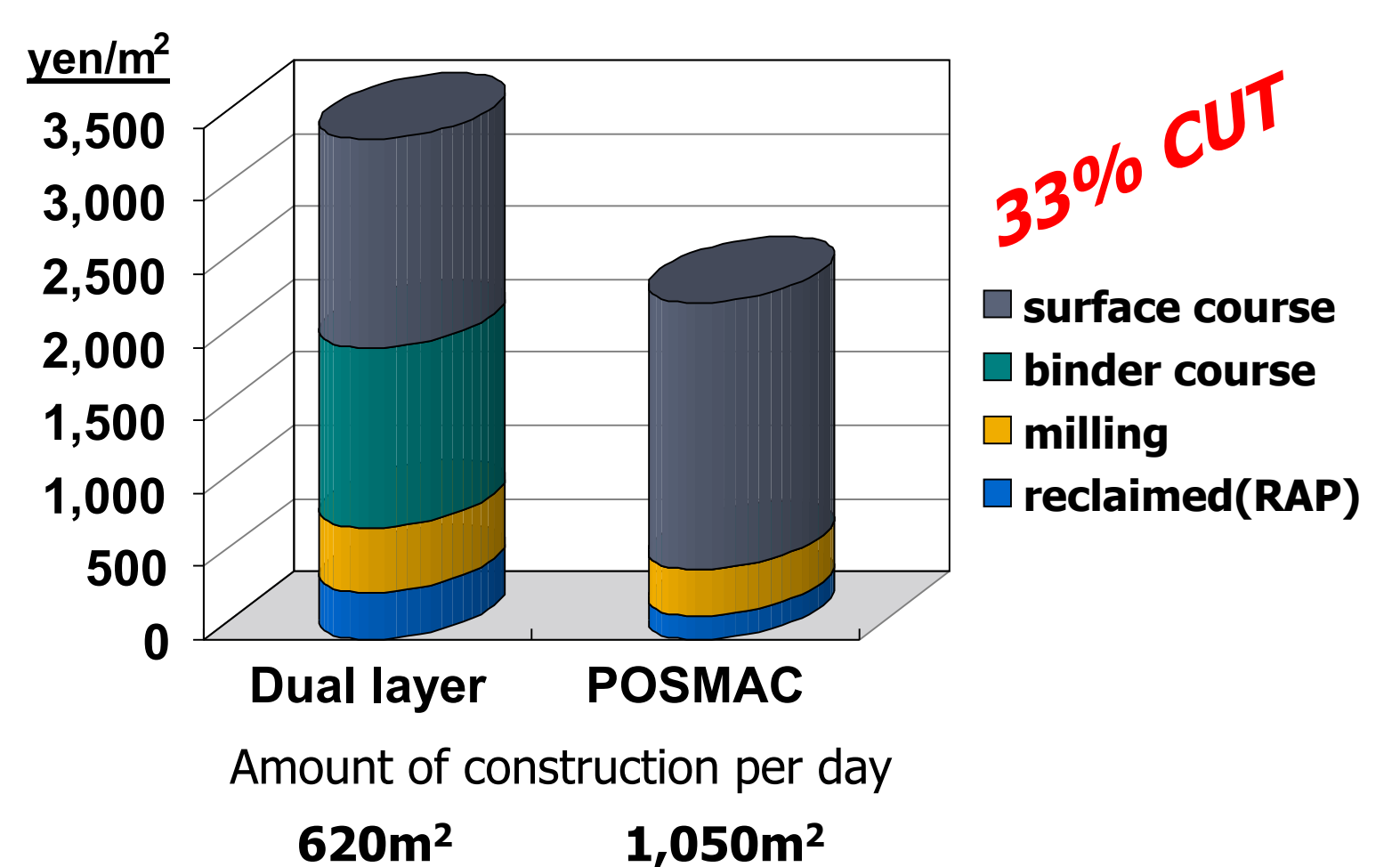
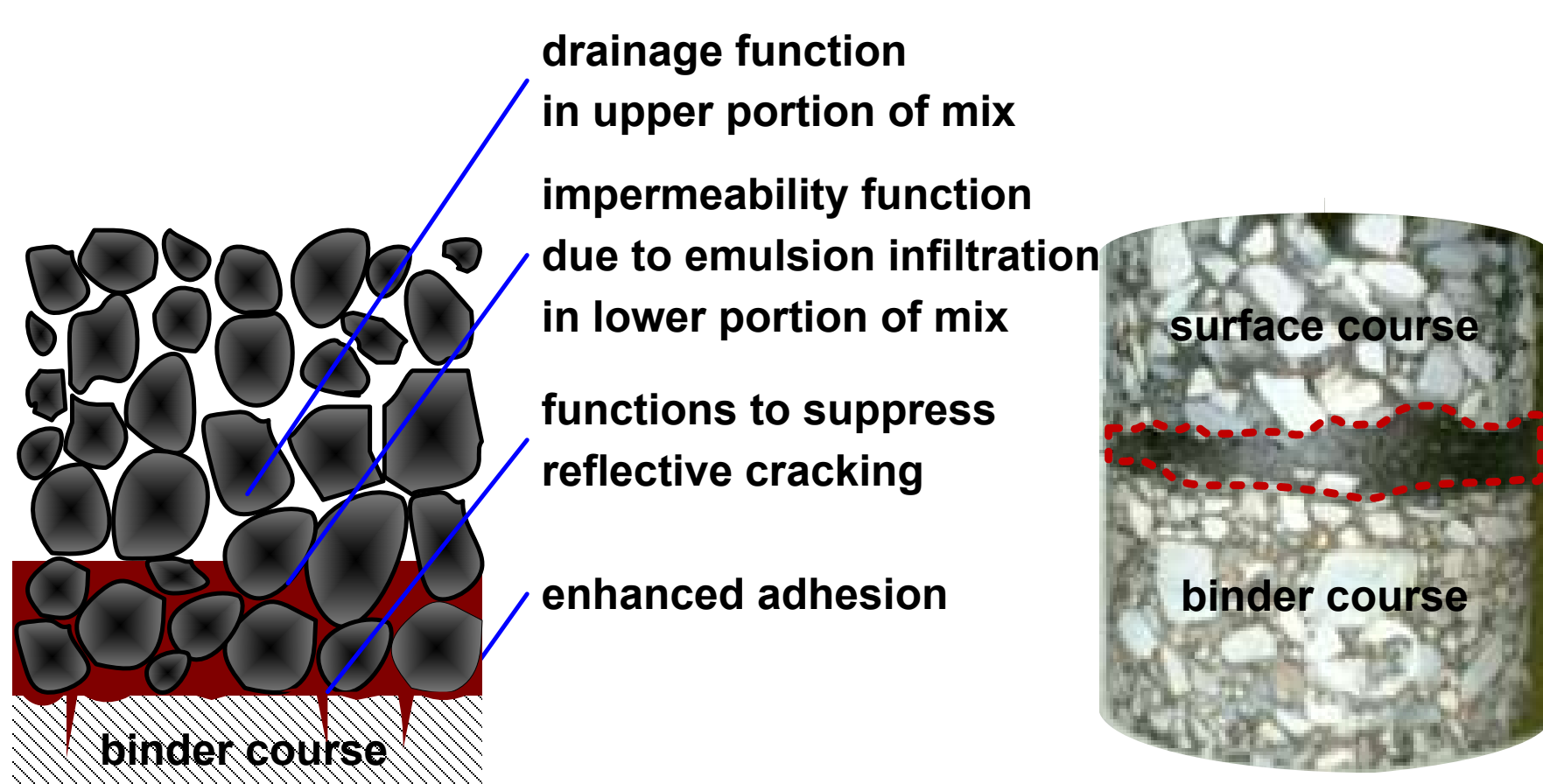
Dual layer build

#### POSMAC



Single layer build

### Improved and added function



# Accelerated Quick Setting Emulsified Asphalt

Tack Fine SQ

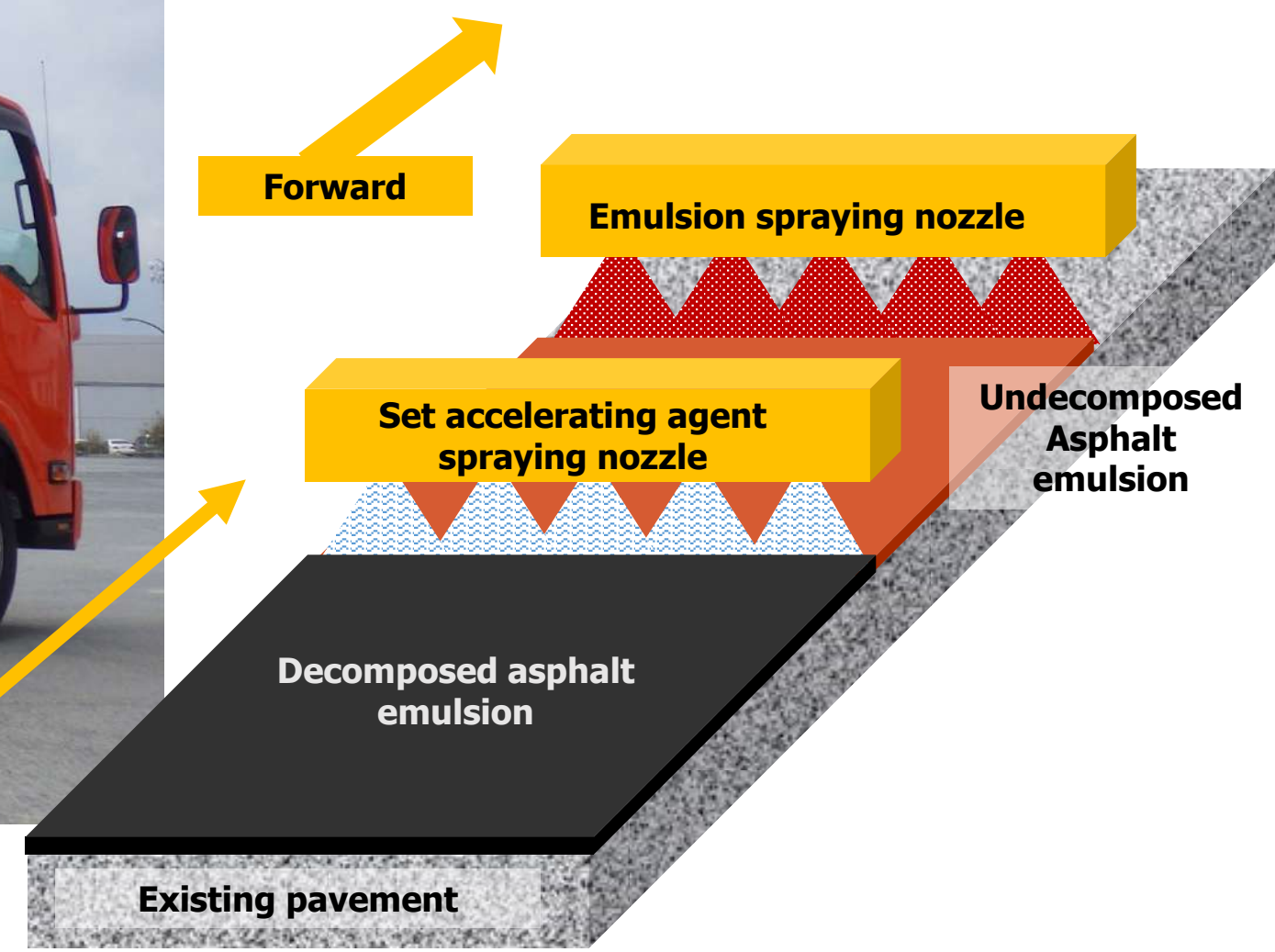
الأسفلت المركب  
السرّيع التصلب

## Overview

Tack Fine SQ is a high-performance tack coat which applies both modified asphalt emulsion and decomposition accelerating agent simultaneously with special distributor. It has excellent rapid setting and trackless to tire, while keeping interlayer adhesion performance.



Neutral decomposition accelerating agent is used

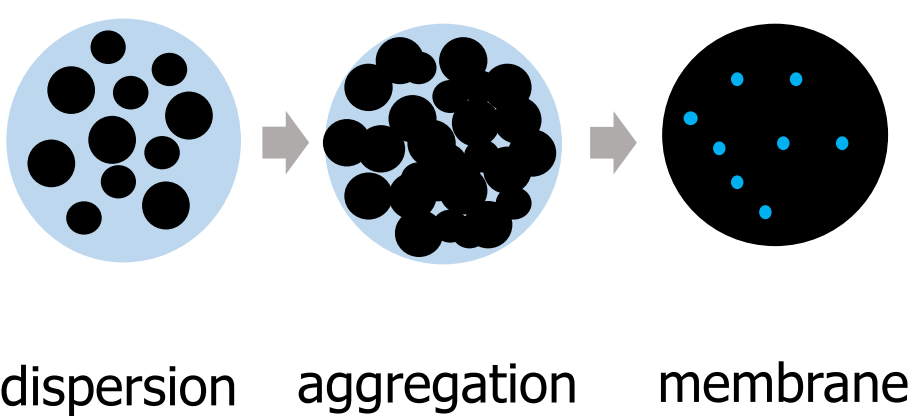


5 minutes after applying asphalt emulsion (Surface Temp: 5°C)



## Shorten working time

### Decomposition (setting)



# Repair Materials for Pavements

## Road Crack Series

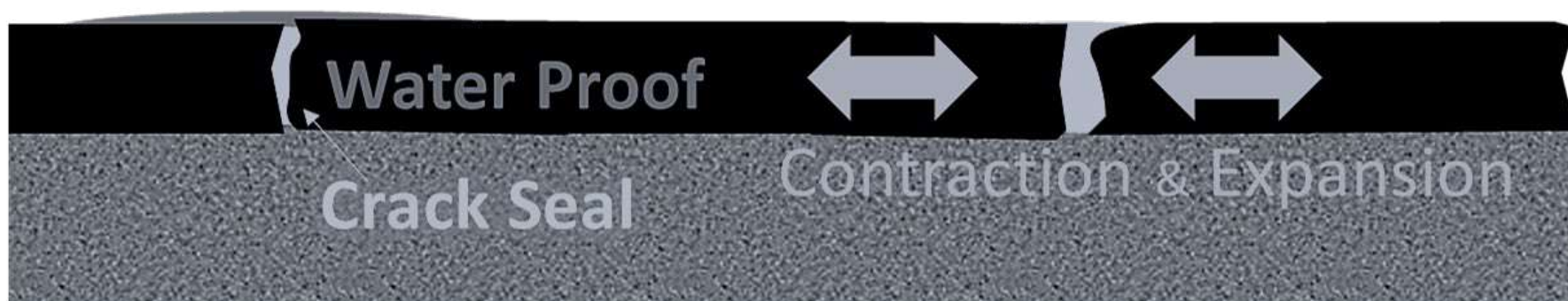
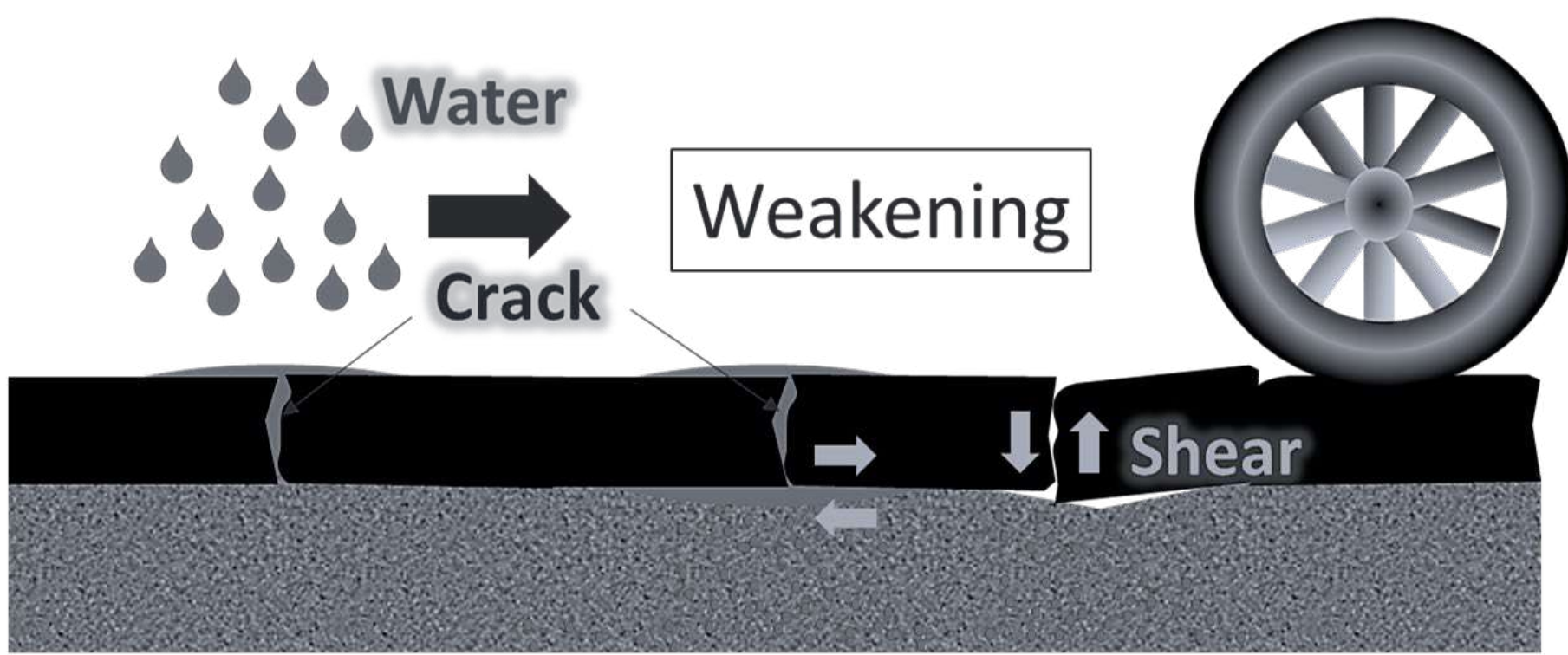
### مواد إصلاح الطرق المعبدة سلسلة تشققات الطرق

#### Overview

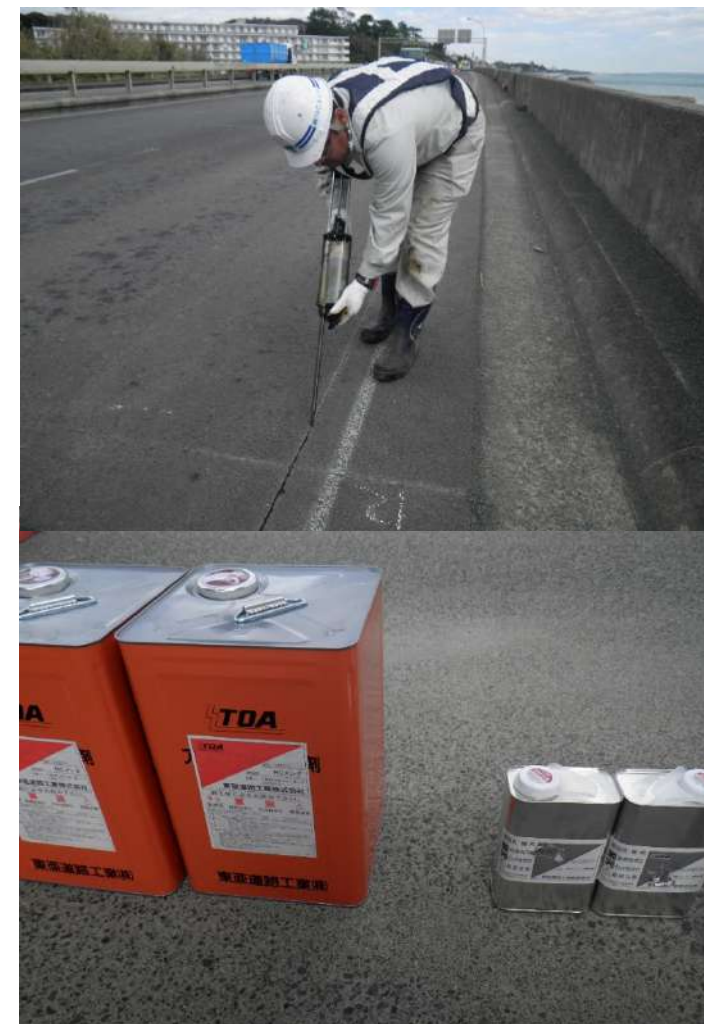
Road Crack Series is repair materials for cracking on asphalt pavement/joint on concrete pavement. Our product line-ups are asphalt emulsion/hot asphalt injection and fabric. It prevents water permeation from cracking or joint.

#### Crack Sealer

##### Mechanisms of cracking in pavement



Items	Hot Sealer RC Sealer	Cold Sealer RC Mente
Reaction	-	Chemical
Workability	Using a hot kettle	Good
Curing time	Very Short	10-30min.
Width of crack	10 mm <	< 10 mm
Cost ratio	1	12



#### Cold Sealer

2 types  
360g Bottle type  
18kg Bottle type

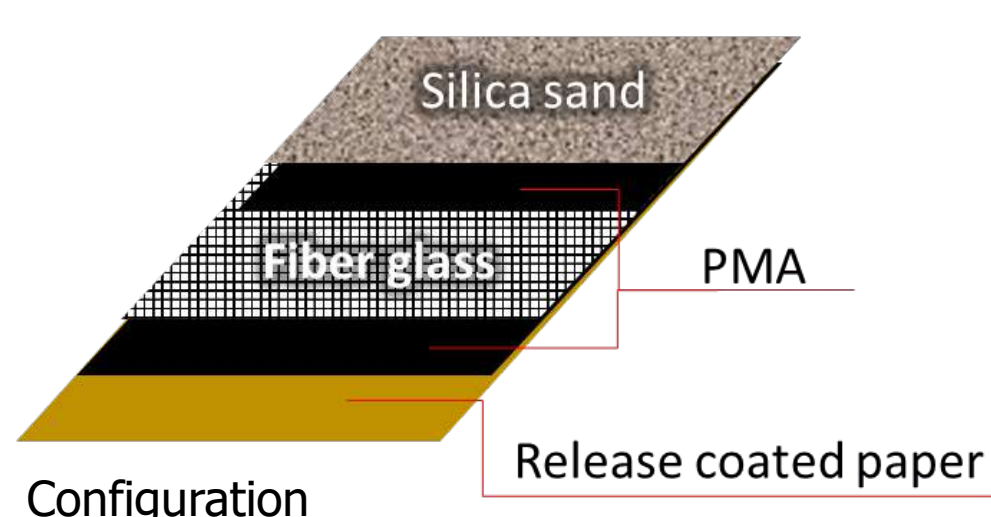
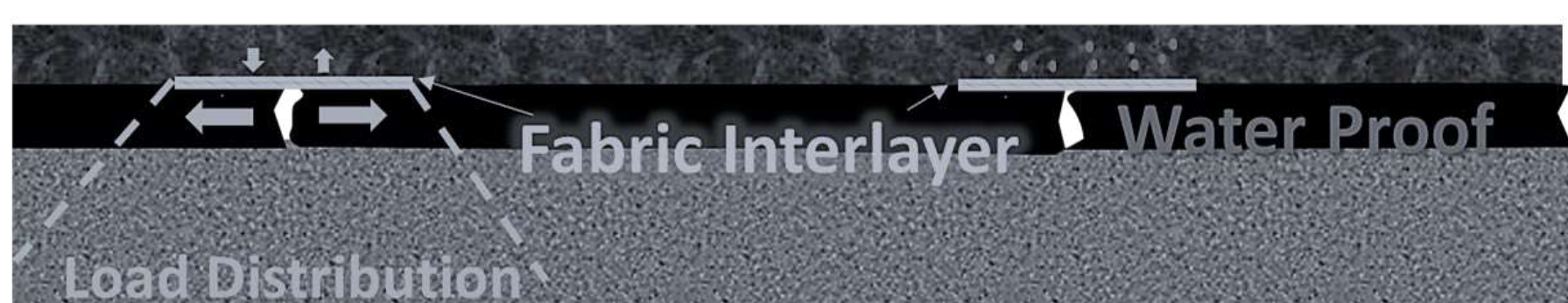
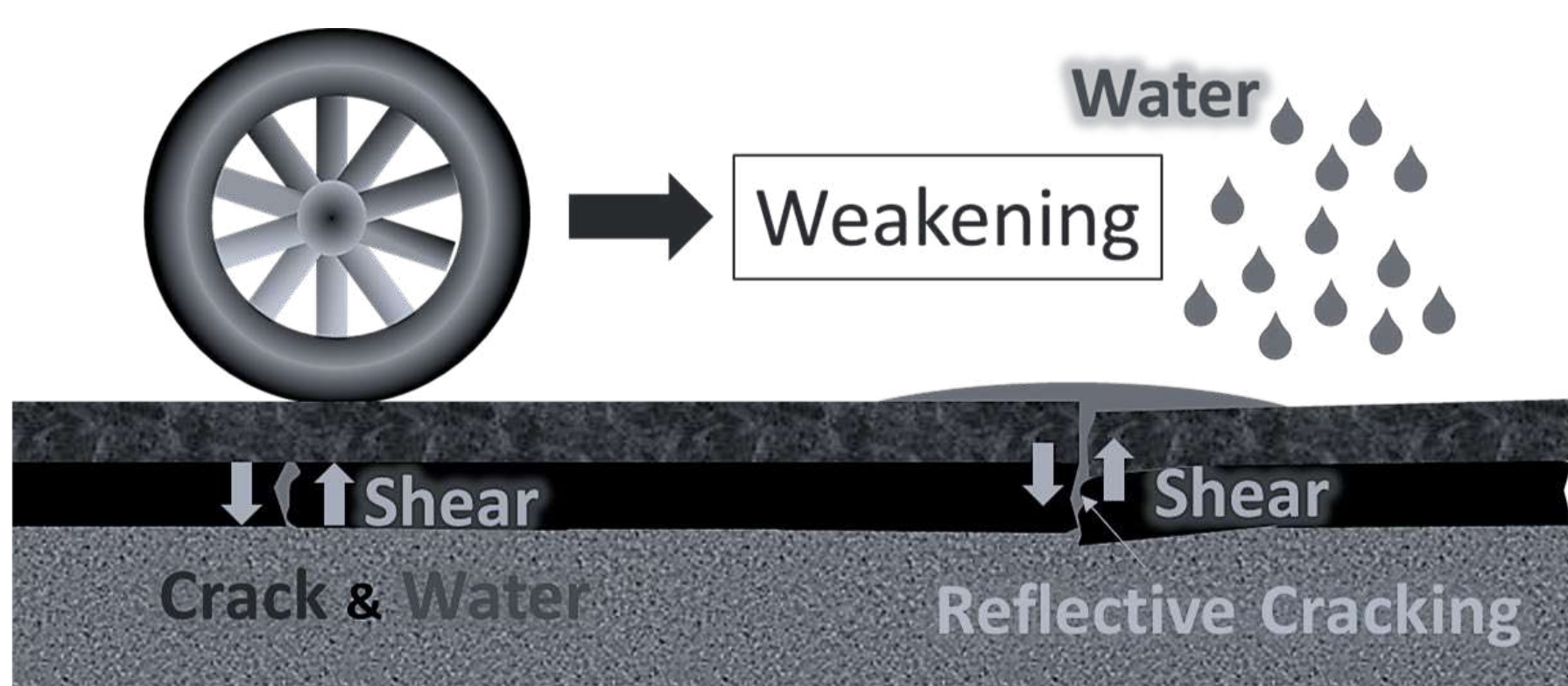


#### Hot Sealer

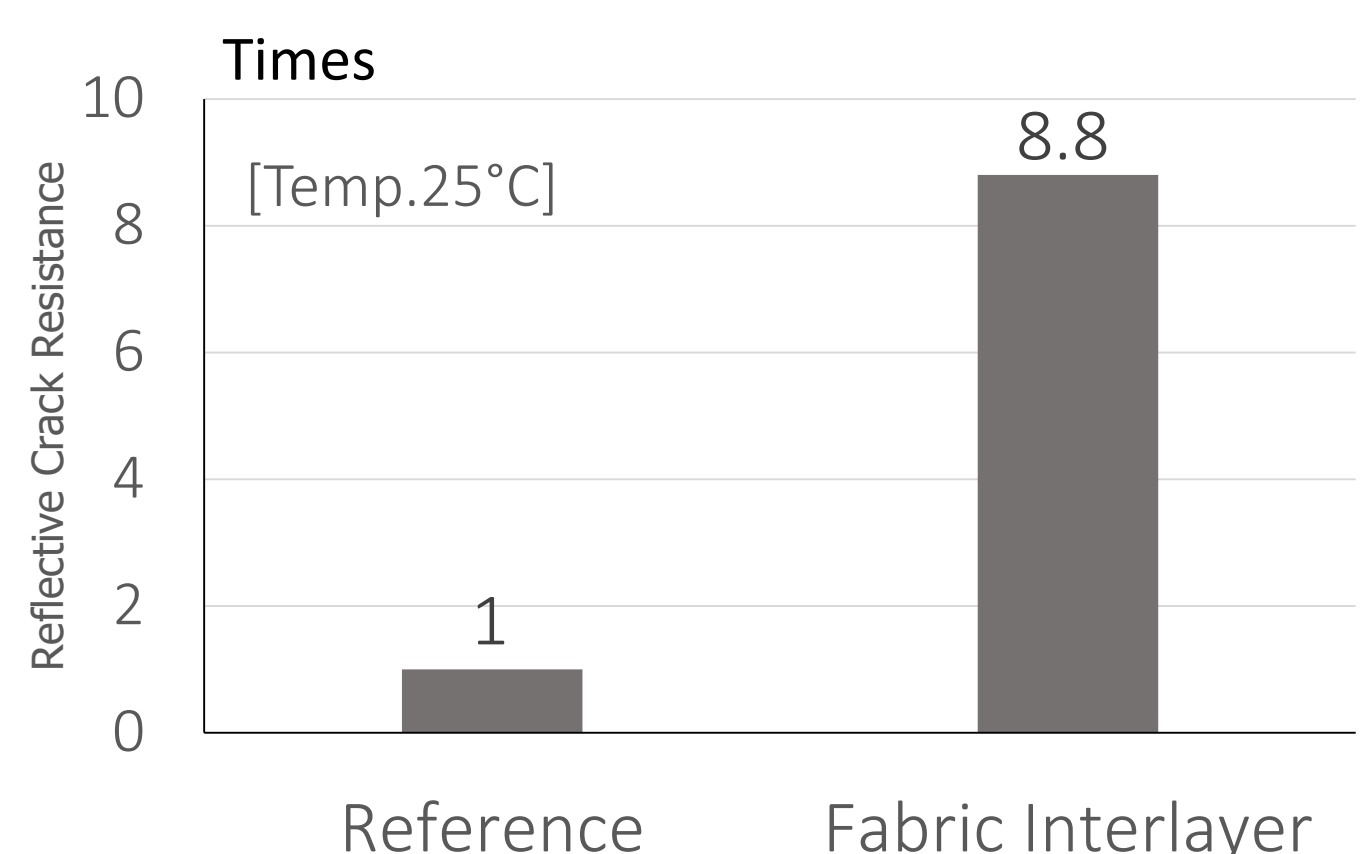
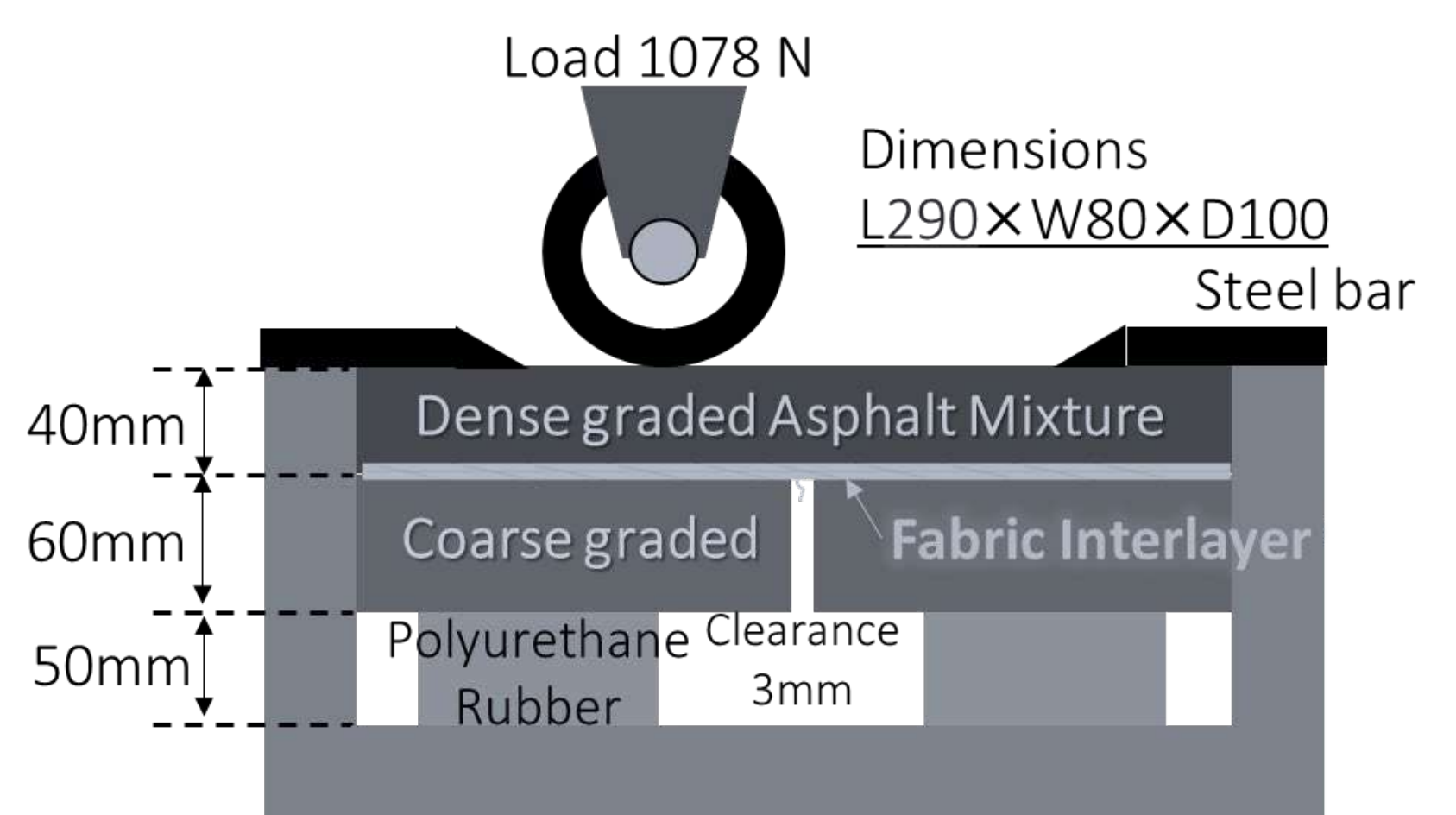
15 kg / box  
2.5 kg x6 piece

#### Fabric Interlayer: RC mesh GM

##### Mechanisms of reflective cracking



##### Reflective crack resistance



# High Stability Asphalt Concrete

HS Ascon

## أسمنت أسفلتي عالي الاستقرار

### Overview

HS Binder is consisted of Polymer Modified Asphalt (HS Asphalt) and thermoplastic resin (HS additive). HS Asphalt is supplied like conventional asphalt. HS additive is put into mixer of asphalt plant directly. Then, HS Asphalt and HS additive are mixed in the asphalt mixture and become HS binder.

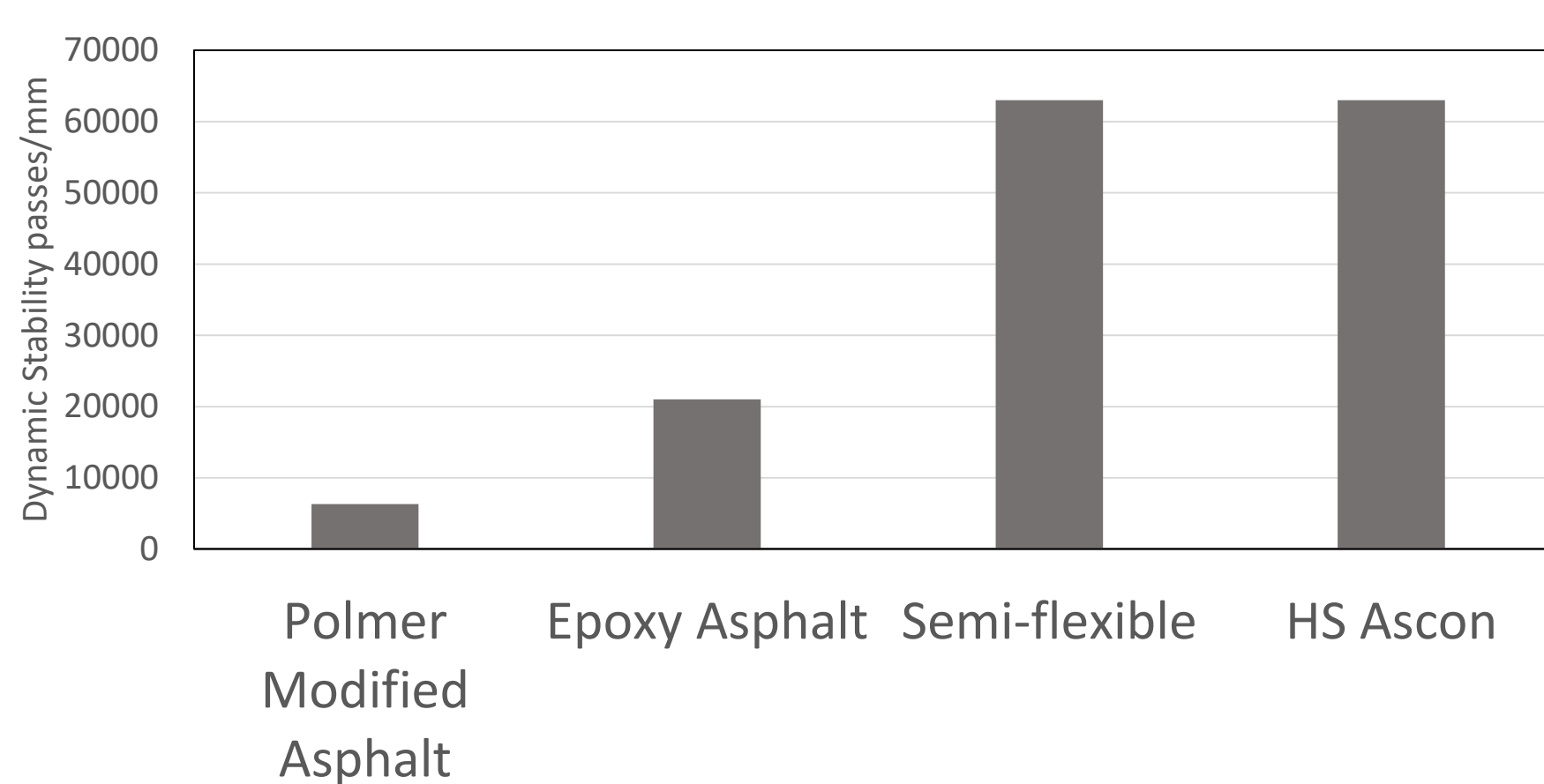
The durability of HS Ascon using HS Binder exceeds that of conventional polymer modified asphalt mixture.

### Characteristics

- ◆ High durability
- ◆ Oil resistance
- ◆ Water resistance
- ◆ Easy Construction

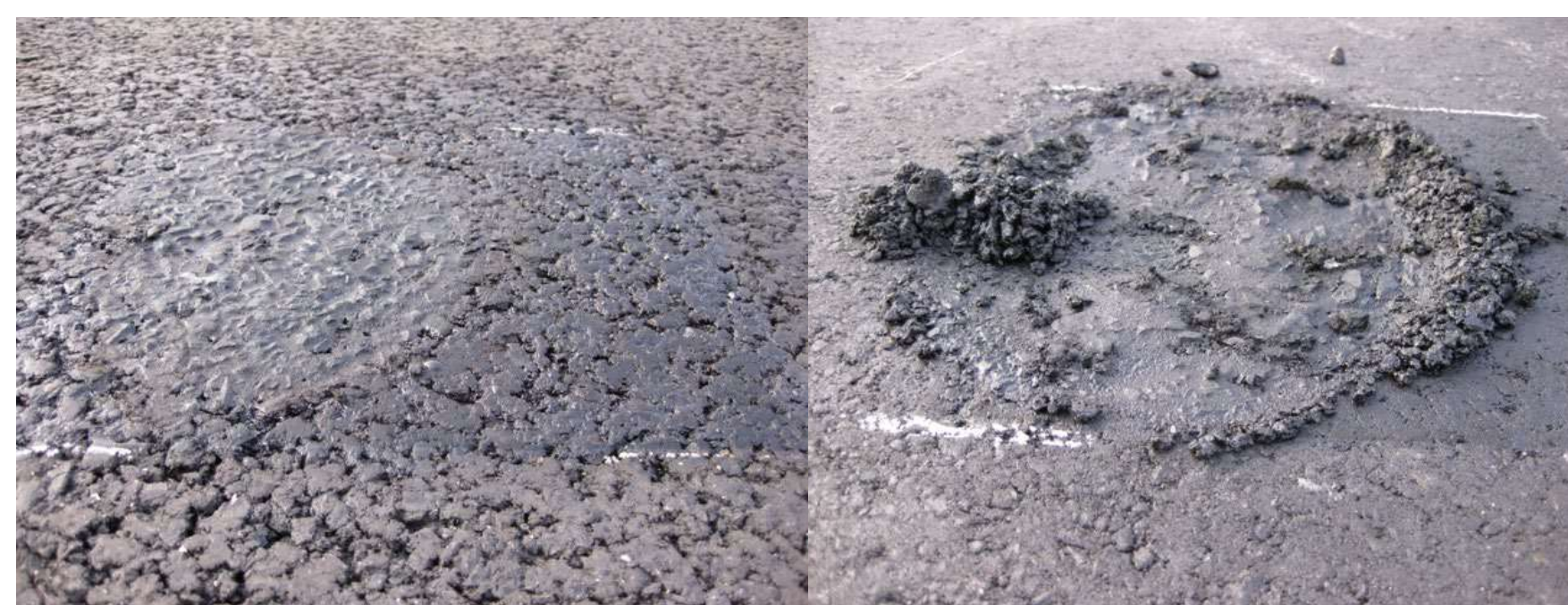


### Rutting Resistance



Dynamic Stability of HS Ascon is remarkably high compared with polymer modified asphalt. Its value is equivalent to the epoxy asphalt mixture or semi-rigid mixture.

### Oil Resistance

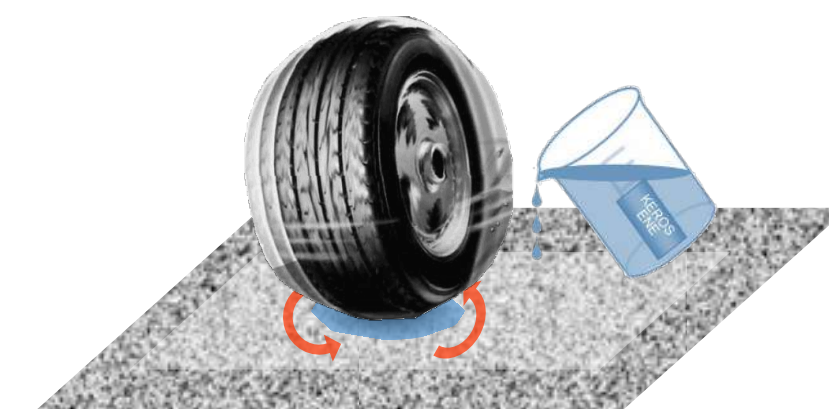


HS Ascon

Conventional

### Test Conditions:

- ◆ Kerosene : 2L/m<sup>2</sup>
- ◆ Loading equipment : Forklift (weight 3.4 t)
- ◆ Number of times : 20 reciprocating motions



### Application areas

